

# ARRIVING PASSENGER SCREENING PROCESS

## DANIEL K. INOUE INTERNATIONAL AIRPORT

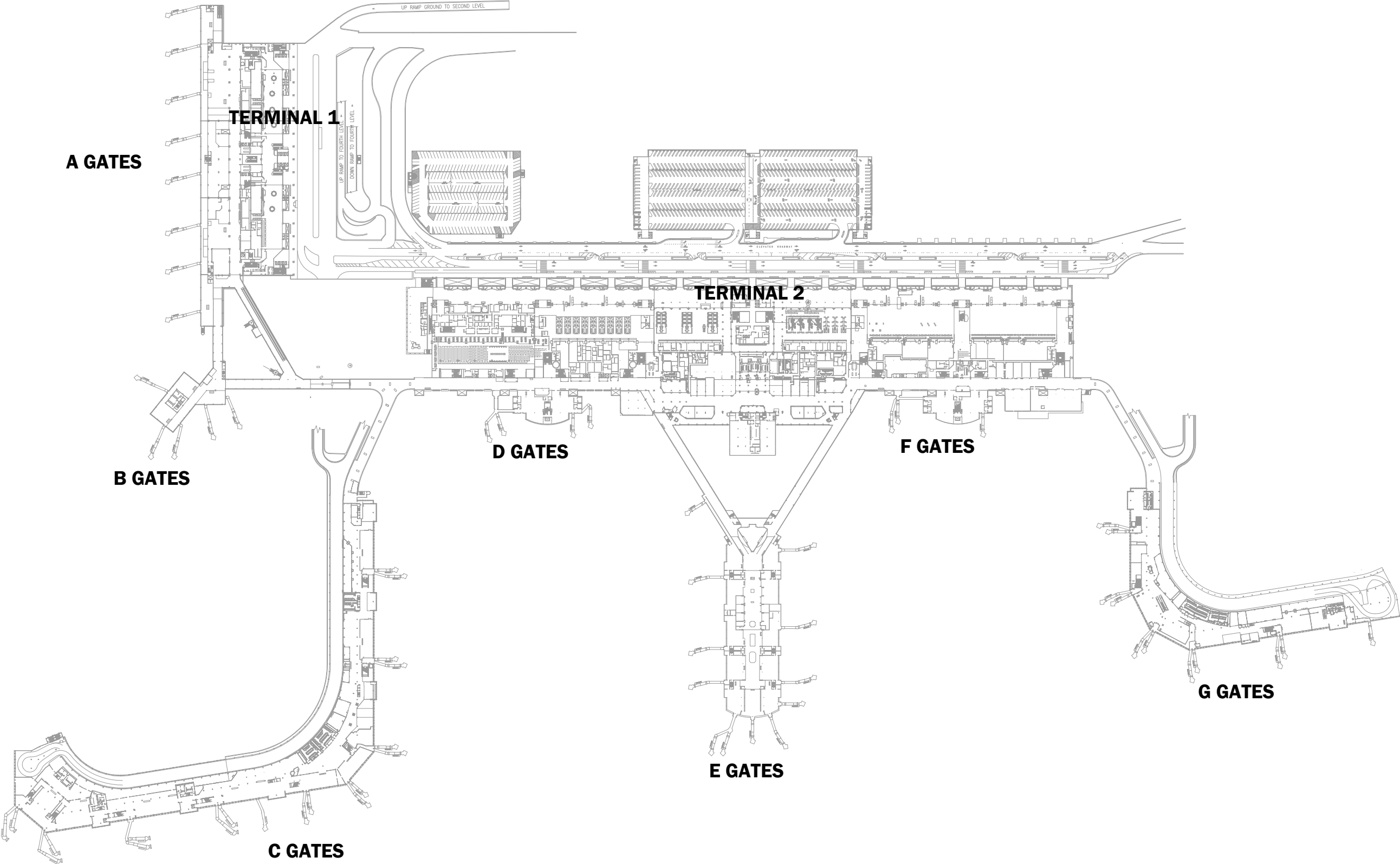
STATUS UPDATE | MAY 6, 2020



# OVERALL FLOOR PLAN

DANIEL K. INOUE INTERNATIONAL AIRPORT

STATUS UPDATE | MAY 6, 2020



C GATES FLOOR PLAN

DANIEL K. INOUE INTERNATIONAL AIRPORT

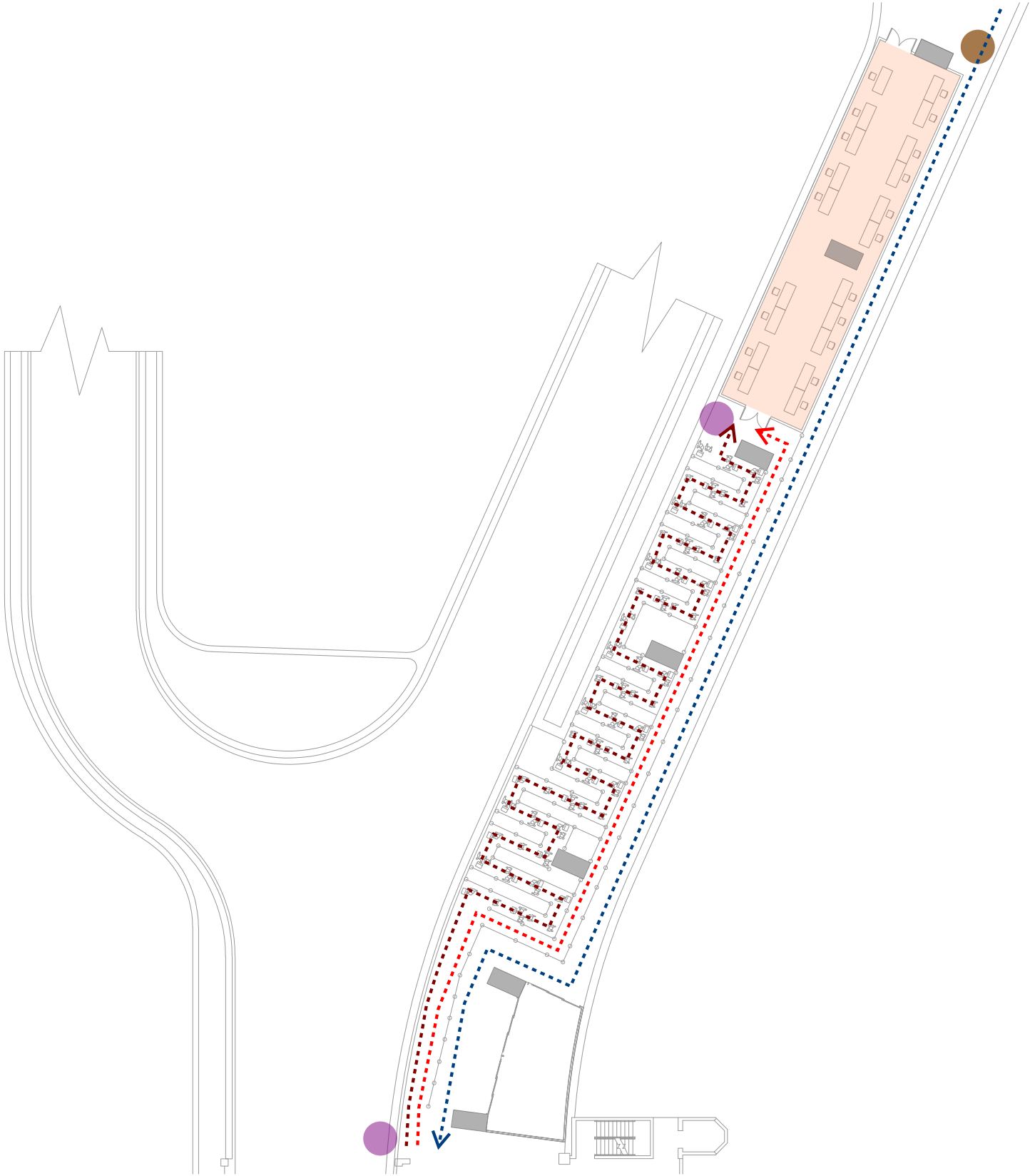
STATUS UPDATE | MAY 6, 2020



C GATES - QUEUING PLAN

DANIEL K. INOUE INTERNATIONAL AIRPORT

STATUS UPDATE | MAY 6, 2020



Legend









- Arriving PAX Circulation / Queue
- Departing PAX Circulation
- Arriving Crew/Exempts Queue
- Checkpoint
- Ag Form Processing Personnel
- Self-Quarantine Order Processing Personnel
- Queue Monitor
- Security

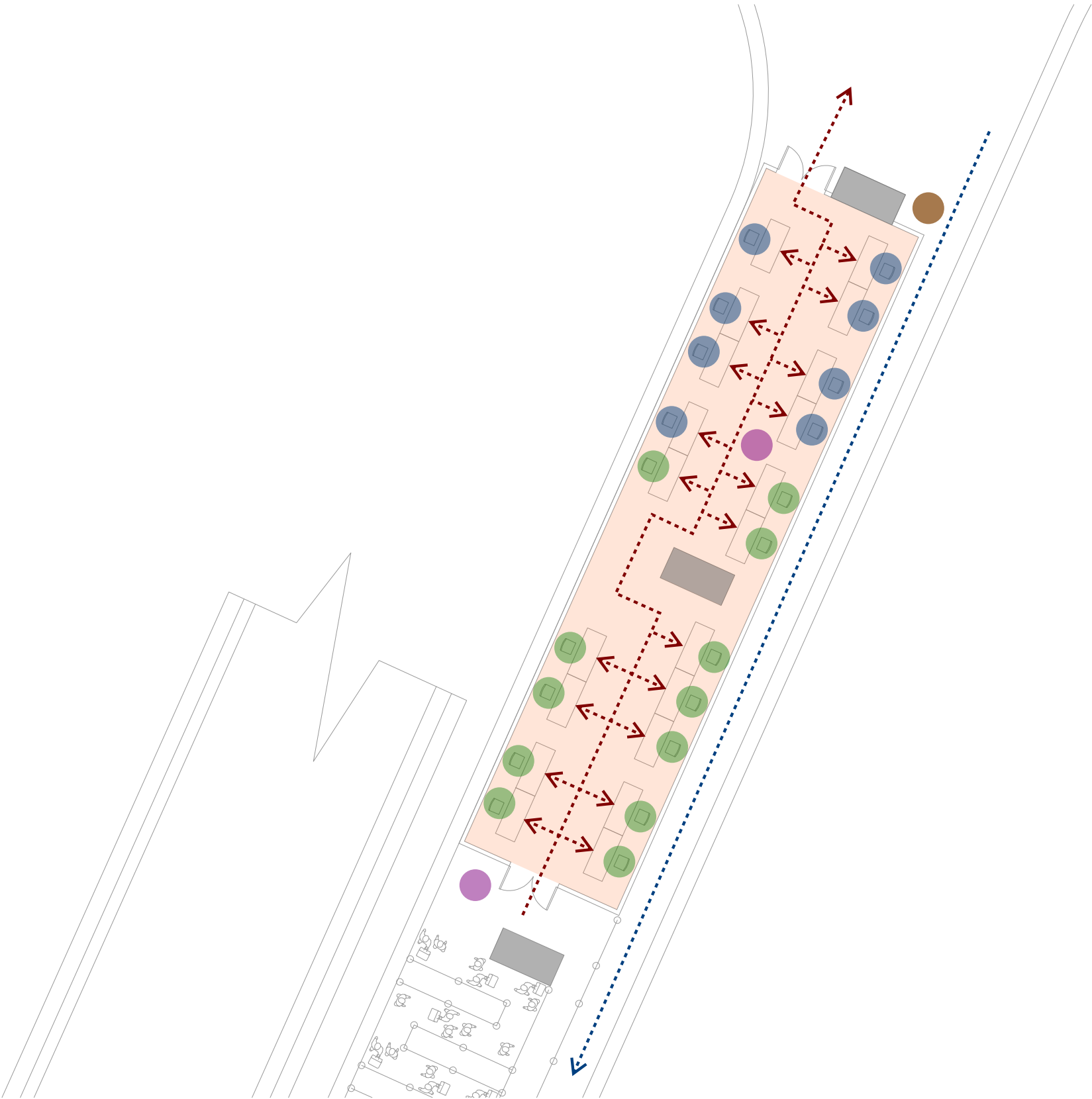
C GATES - ENLARGED FLOOR PLAN

DANIEL K. INOUE INTERNATIONAL AIRPORT

STATUS UPDATE | MAY 6, 2020

Legend

-  Arriving PAX Circulation / Queue
-  Departing PAX Circulation
-  Arriving Crew/Exempts Queue
-  Checkpoint
-  Ag Form Processing Personnel
-  Self-Quarantine Order Processing Personnel
-  Queue Monitor
-  Security

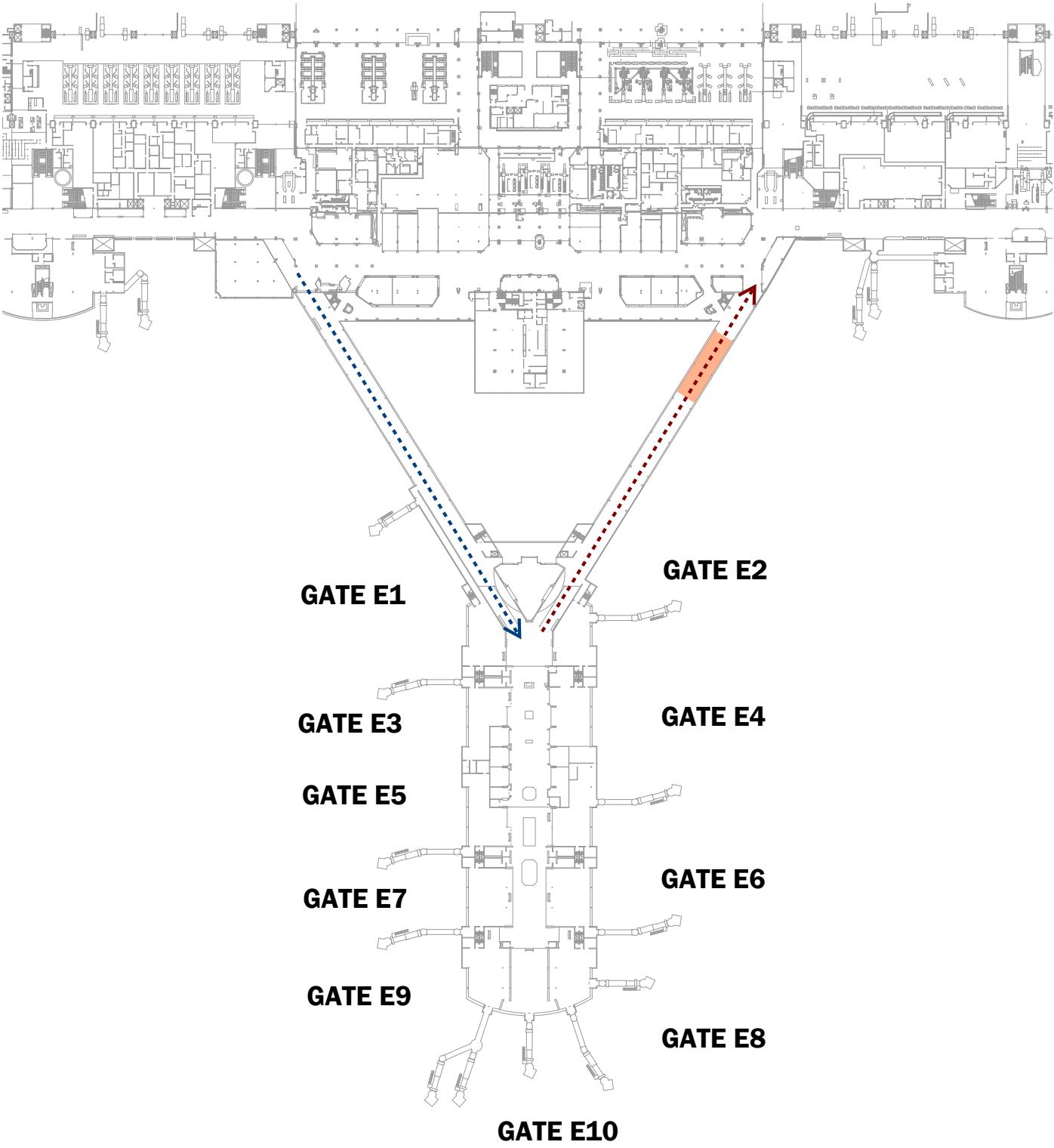


ARRIVING PASSENGER SCREENING PROCESS

E GATES FLOOR PLAN

DANIEL K. INOUE INTERNATIONAL AIRPORT

STATUS UPDATE | MAY 6, 2020



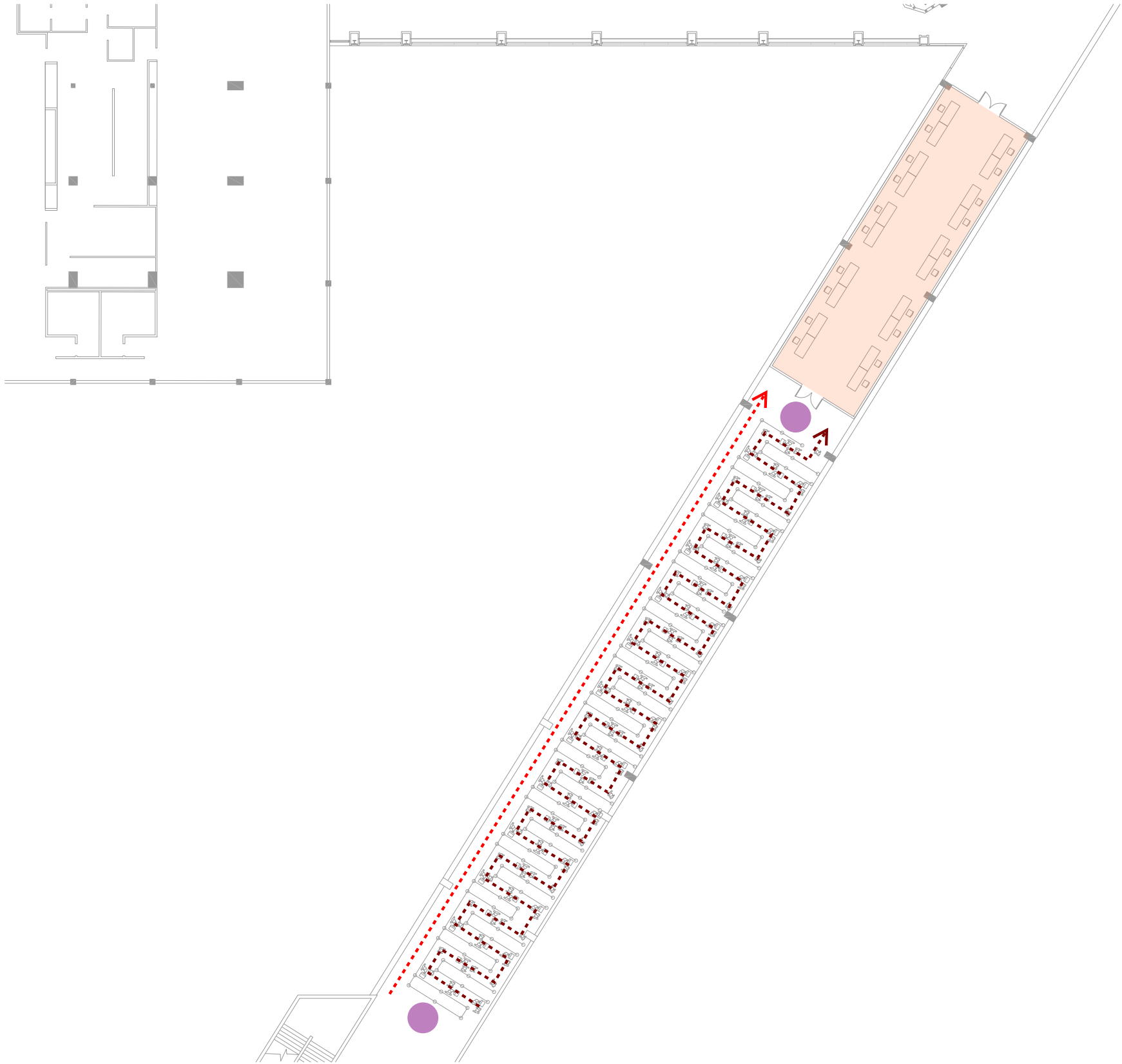
Legend

- Arriving PAX Circulation / Queue
- Departing PAX Circulation
- Arriving Crew/Exempts Queue
- Checkpoint
- Ag Form Processing Personnel
- Self-Quarantine Order Processing Personnel
- Queue Monitor
- Security

E GATES - QUEUING PLAN

DANIEL K. INOUE INTERNATIONAL AIRPORT

STATUS UPDATE | MAY 6, 2020



Legend

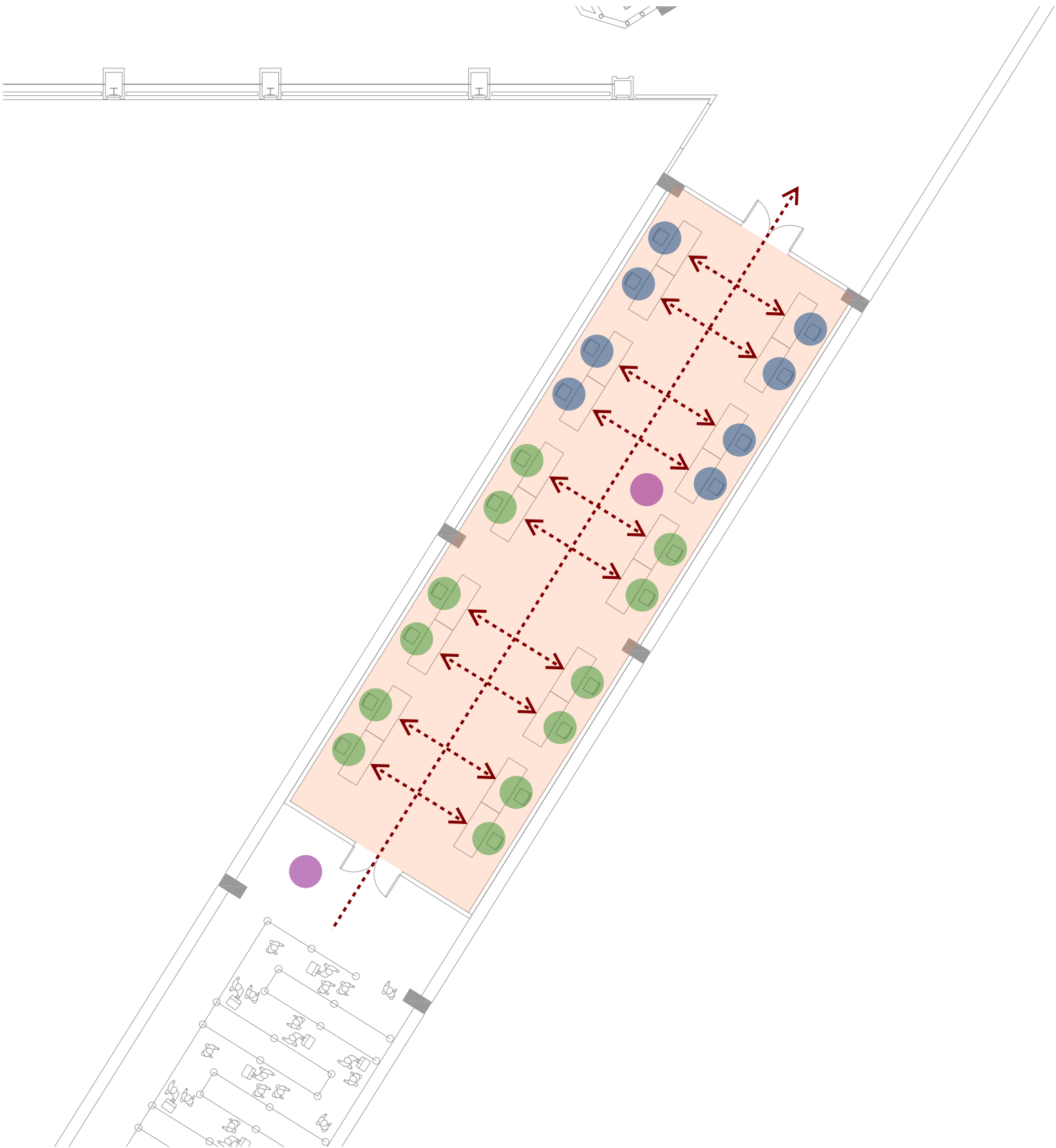
- Arriving PAX Circulation / Queue
- Departing PAX Circulation
- Arriving Crew/Exempts Queue
- Checkpoint
- Ag Form Processing Personnel
- Self-Quarantine Order Processing Personnel
- Queue Monitor
- Security

ARRIVING PASSENGER SCREENING PROCESS

# E GATES - ENLARGED FLOOR PLAN

DANIEL K. INOUE INTERNATIONAL AIRPORT

STATUS UPDATE | MAY 6, 2020



## Legend

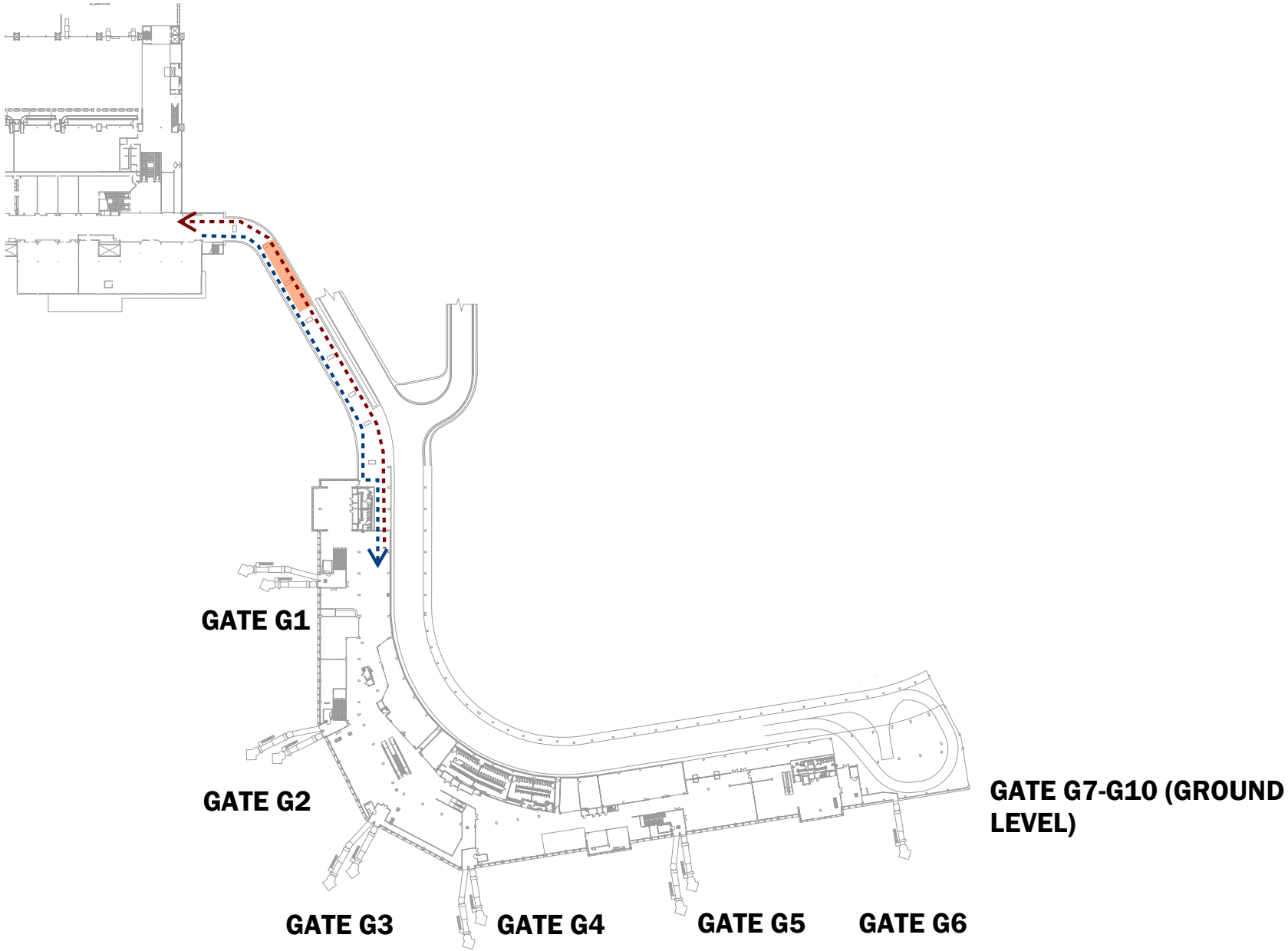
- ←... Arriving PAX Circulation / Queue
- ←... Departing PAX Circulation
- ←... Arriving Crew/Exempts Queue
- Checkpoint
- Ag Form Processing Personnel
- Self-Quarantine Order Processing Personnel
- Queue Monitor
- Security



# G GATES FLOOR PLAN

DANIEL K. INOUE INTERNATIONAL AIRPORT

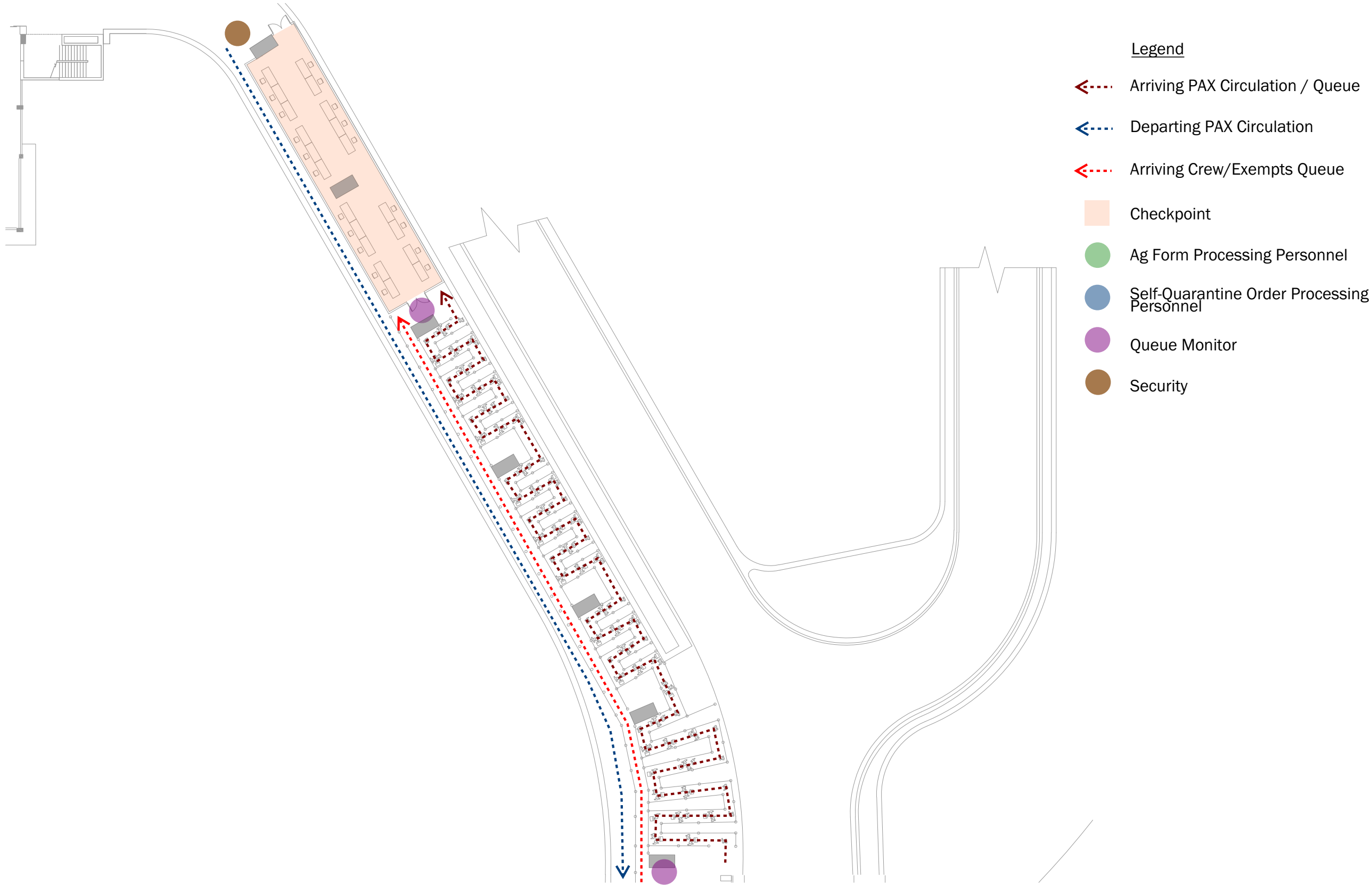
STATUS UPDATE | MAY 6, 2020



# G GATES - QUEUING PLAN

DANIEL K. INOUE INTERNATIONAL AIRPORT

STATUS UPDATE | MAY 6, 2020



ARRIVING PASSENGER SCREENING PROCESS

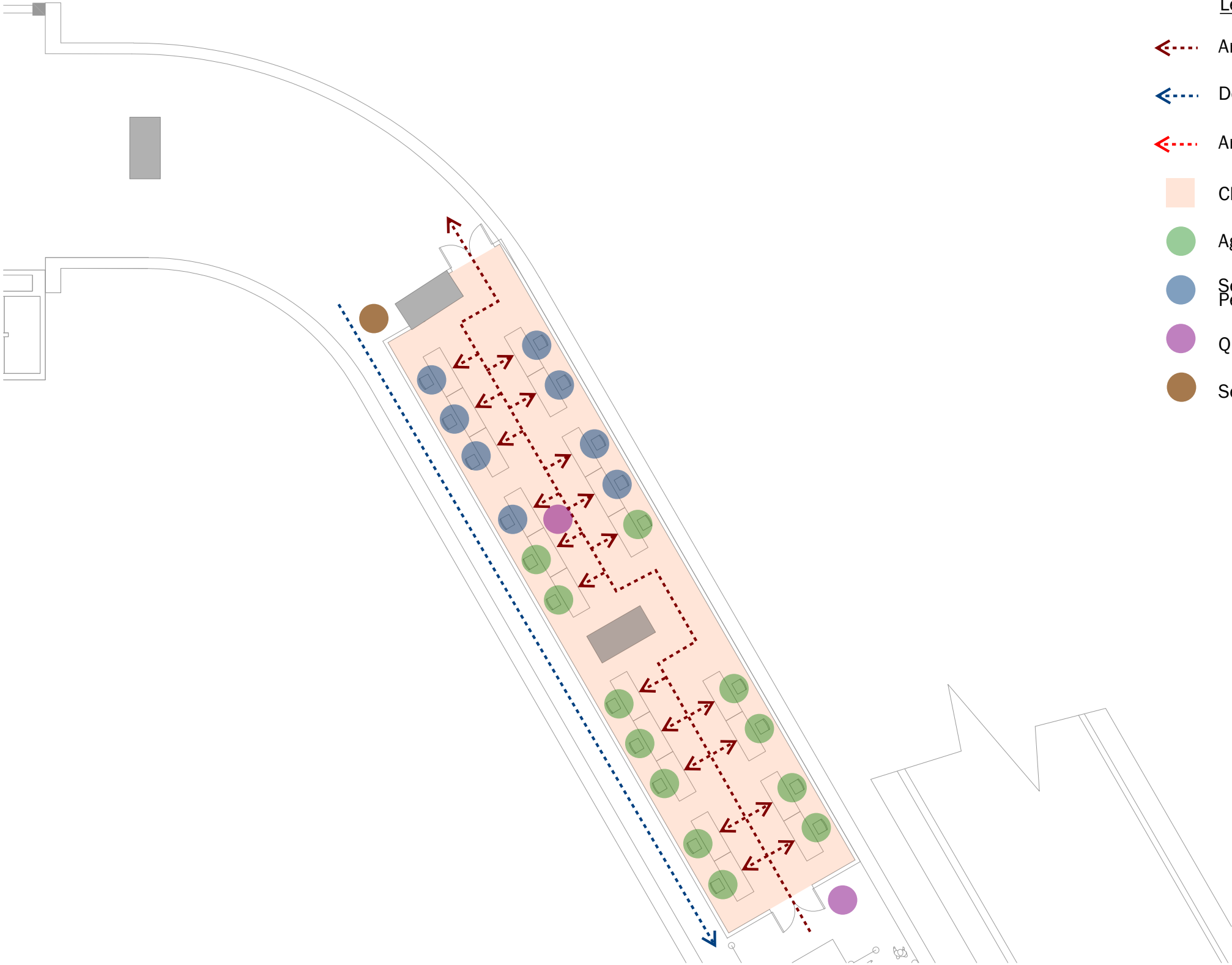
# G GATES - ENLARGED FLOOR PLAN

DANIEL K. INOUE INTERNATIONAL AIRPORT

STATUS UPDATE | MAY 6, 2020

Legend

- ←... Arriving PAX Circulation / Queue
- ←... Departing PAX Circulation
- ←... Arriving Crew/Exempts Queue
- Checkpoint
- Ag Form Processing Personnel
- Self-Quarantine Order Processing Personnel
- Queue Monitor
- Security



ARRIVING PASSENGER SCREENING PROCESS

SCREENING PERSONNEL TABLE: PEAK HOUR SHIFT

8-HOUR SHIFT

STATUS UPDATE | MAY 6, 2020

| <u>Location</u> | <u>Screening Method</u> | Ag Form           | Self-Quarantine         | <u>Queue Monitor</u> | <u>Total</u> |
|-----------------|-------------------------|-------------------|-------------------------|----------------------|--------------|
|                 |                         | <u>Processing</u> | <u>Order Processing</u> |                      |              |
| A Gates:        | At gates                | 12                | 8                       | 3                    | 23           |
| B Gates*:       | -                       | -                 | -                       | -                    | -            |
| C Gates:        | Checkpoint              | 12                | 8                       | 3                    | 23           |
| D Gates:        | At gates                | 6                 | 4                       | 1                    | 11           |
| E Gates:        | Checkpoint              | 12                | 8                       | 3                    | 23           |
| F Gates:        | At gates                | 6                 | 4                       | 1                    | 11           |
| G Gates:        | Checkpoint              | 12                | 8                       | 3                    | 23           |
| Total:          |                         | 60                | 40                      | 14                   | 114          |

\*Note: Inter-island flights only at B Gates

SCREENING PERSONNEL TABLE: NON-PEAK HOUR

8-HOUR SHIFT

STATUS UPDATE | MAY 6, 2020

|                 |                         | Ag Form           | Self-Quarantine         |                      |              |
|-----------------|-------------------------|-------------------|-------------------------|----------------------|--------------|
| <u>Location</u> | <u>Screening Method</u> | <u>Processing</u> | <u>Order Processing</u> | <u>Queue Monitor</u> | <u>Total</u> |
| A Gates:        | At gates                | 4                 | 3                       | 2                    | 9            |
| B Gates*:       | -                       | -                 | -                       | -                    | -            |
| C Gates:        | Checkpoint              | 4                 | 3                       | 2                    | 9            |
| D Gates:        | At gates                | 4                 | 3                       | 1                    | 8            |
| E Gates:        | Checkpoint              | 4                 | 3                       | 2                    | 9            |
| F Gates:        | At gates                | 4                 | 3                       | 1                    | 8            |
| G Gates:        | Checkpoint              | 4                 | 3                       | 2                    | 9            |
| Total:          |                         | 24                | 18                      | 10                   | 52           |

\*Note: Inter-island flights only at B Gates

SECURITY PERSONNEL TABLE: PEAK HOUR SHIFT

8-HOUR SHIFT

STATUS UPDATE | MAY 6, 2020

| Location | Screening Method | Security |
|----------|------------------|----------|
| A Gates: | At gates         | -        |
| B Gates: | -                | -        |
| C Gates: | Checkpoint       | 1        |
| D Gates: | At gates         | -        |
| E Gates: | Checkpoint       | 1        |
| F Gates: | At gates         | -        |
| G Gates: | Checkpoint       | 1        |
| Total:   |                  | 3        |

SECURITY PERSONNEL TABLE: NON - PEAK HOUR SHIFT

8-HOUR SHIFT

STATUS UPDATE | MAY 6, 2020

| <u>Location</u> | <u>Screening Method</u> | <u>Security</u> |
|-----------------|-------------------------|-----------------|
| A Gates:        | At gates                | -               |
| B Gates:        | -                       | -               |
| C Gates:        | Checkpoint              | 1               |
| D Gates:        | At gates                | -               |
| E Gates:        | Checkpoint              | 1               |
| F Gates:        | At gates                | -               |
| G Gates:        | Checkpoint              | 1               |
| Total:          |                         | 3               |

SCREENING PERSONNEL TABLE: DAILY TOTAL

16 HOURS - PEAK HOUR + NON-PEAK HOUR SHIFTS

STATUS UPDATE | MAY 6, 2020

|  |  |                                   |                                   |                      |                   |
|--|--|-----------------------------------|-----------------------------------|----------------------|-------------------|
| Personnel at<br><u>Peak Hour Shift</u> | Personnel at<br><u>Non-Peak Hour Shift</u> | Total Personnel<br><u>per Day</u> | Total Man-hours<br><u>per Day</u> | <u>Cost Per Hour</u> | <u>Total Cost</u> |
| 114                                    | 52   | 166                               | 1,328                             | \$30/hr              | \$39,840          |
| Security at<br><u>Peak Hour Shift</u>  | Security at<br><u>Non-Peak Hour Shift</u>  | Total Security<br><u>per Day</u>  | Total Man-hours<br><u>per Day</u> | <u>Cost Per Hour</u> | <u>Total Cost</u> |
| 3                                      | 3  | 6                                 | 48                                | \$42/hr              | \$2,016           |
|  |  |                                   |                                   | Total Cost/Day:      | \$41,856          |
|  |  |                                   |                                   | Total Cost/Year:     | \$14,900,736      |